

Welcome to SSEC UW-Madison



SSEC - Home to “Father of Satellite Meteorology”
Prof. Verner E. Suomi (1915-1995)



WISCONSIN
UNIVERSITY OF WISCONSIN-MADISON



27 June, 2017
Madison Wisconsin

Space Science & Engineering Center (SSEC) Satellite System Infrastructure



- ❑ One of the world largest non-profit & non-governmental Center for both GEO & LEO satellite receiving, processing, dissemination and archive.
- ❑ Has satellite sensor, algorithm, science, and application expertise
- ❑ Home to the center which provide meteorological satellite end-to-end turned key system and processing s/w packages for level 0 to level 3 (SDR to IDR)
- ❑ Has designed, built and operated UW campus largest high performance computing system for large domain and high spatial resolution weather forecast
- ❑ Has offered satellite remote sensing training and education courses/seminars to students, scientists, and professionals

SSEC

Data Center Antennas



- C-Band

- 11 meter heated (87° West - SES-2, POES Wallops Relay, MSG)
- 7.3 meter backup (101° West - SES-1, POES Fairbanks Relay, MTSAT, Noaaport)
- 6.3 meter heated (101° West - SES-1, POES Fairbanks Relay, MTSAT, Noaaport)

- L-Band

- 7.3 meter (75° West -GOES-East Primary)
- 4.6 meter (135° West -GOES-West Primary)
- 4.5 meter (60° West -GOES-SA auto tracking)
- 4.5 meter (90° West -GOES-test/spare)
- 3.7 meter (offline spare)

- X-Band

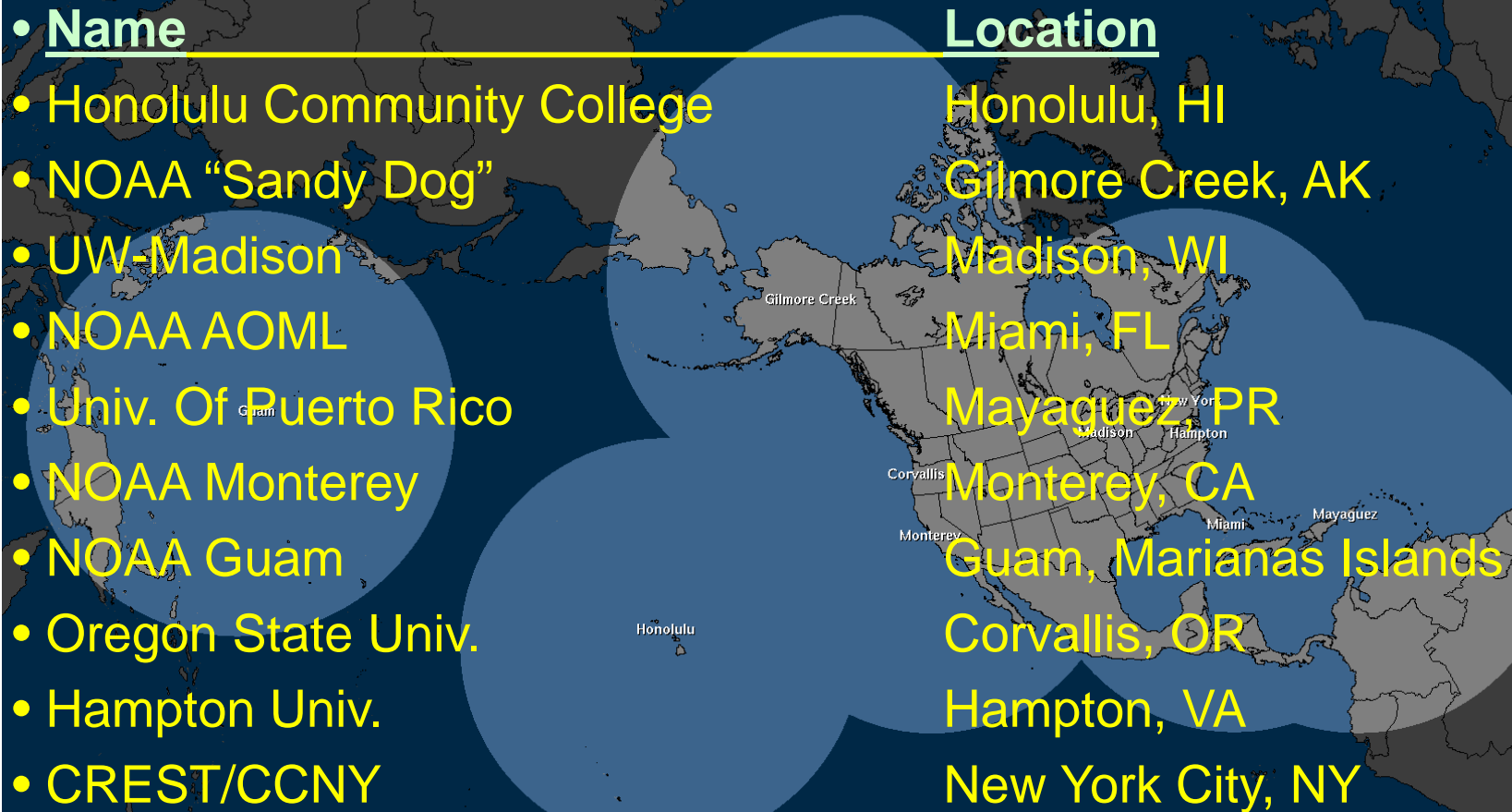
- 4.4 meter (Tracking - EOS)

- X/L Band

- 2.4 meter (Tracking - Suomi NPP, EOS, metop, FY1 and FY3)



DB Antenna Sites - NOAA and partners



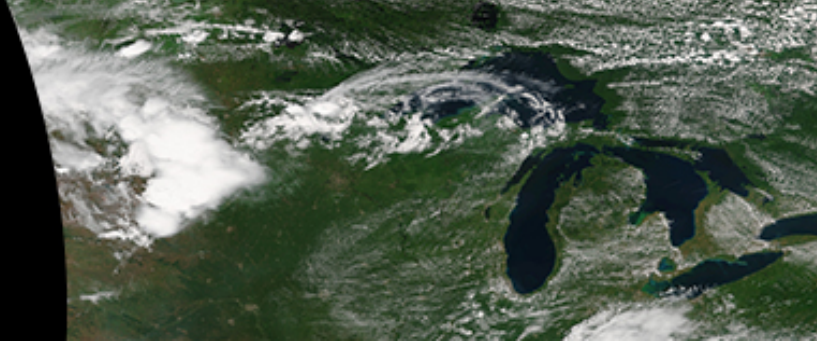
<u>Name</u>	<u>Location</u>
• Honolulu Community College	Honolulu, HI
• NOAA "Sandy Dog"	Gilmore Creek, AK
• UW-Madison	Madison, WI
• NOAA AOML	Miami, FL
• Univ. Of Puerto Rico	Mayaguez, PR
• NOAA Monterey	Monterey, CA
• NOAA Guam	Guam, Marianas Islands
• Oregon State Univ.	Corvallis, OR
• Hampton Univ.	Hampton, VA
• CREST/CCNY	New York City, NY

NOAA Real Time Network



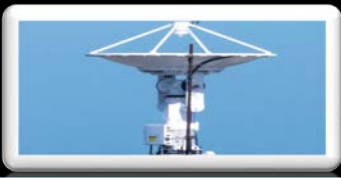
CSPP / IMAPP Users' Group Meeting

|| 27-29 June 2017 | Fluno Center
University of Wisconsin-Madison

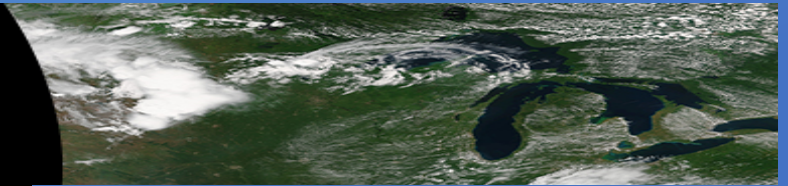


The goal of the meeting is to bring together the users like you to discuss issues relevant to **reception, processing, and applications** of data acquired by direct broadcast from US (NOAA & NASA) and international LEO/GEO Wx Satellites:

- To support NOAA's and NASA's missions
- To advance “broad” and “optimal” usage
- To facilitate collaborations among users in sharing resources, tools and know-how, and most importantly,
- To make friends to strengthen our community



CSPP / IMAPP
User's Group Meeting
27-29 June 2017 | Plant Center
University of Wisconsin-Madison



OUR GENEROUS SPONSORS

